

Comparison Ariadna and Caicif2 delay models.

Within the bounds of testing **ASC** software correlator (**AscFX**) a comparison of delay model **Ariadna** (*V. Zharov, Sternberg Astronomical Institute*) with **calcif2** (used in **DiFX 1.5.1, ATNF**) delay model was done. The comparison was executed with **RDV70** data set which had been taken from **DiFX** test examples. Data for two stations (**NYALES20** and **ONSALA**) were transformed from **Mark5** format to **AscFX** input format **RDF** and then the cross correlation function between these two stations was estimated. Left side of the Fig.1 corresponds to **Ariadna** software, and the right one to **calcif2** software. The results are quite similar.

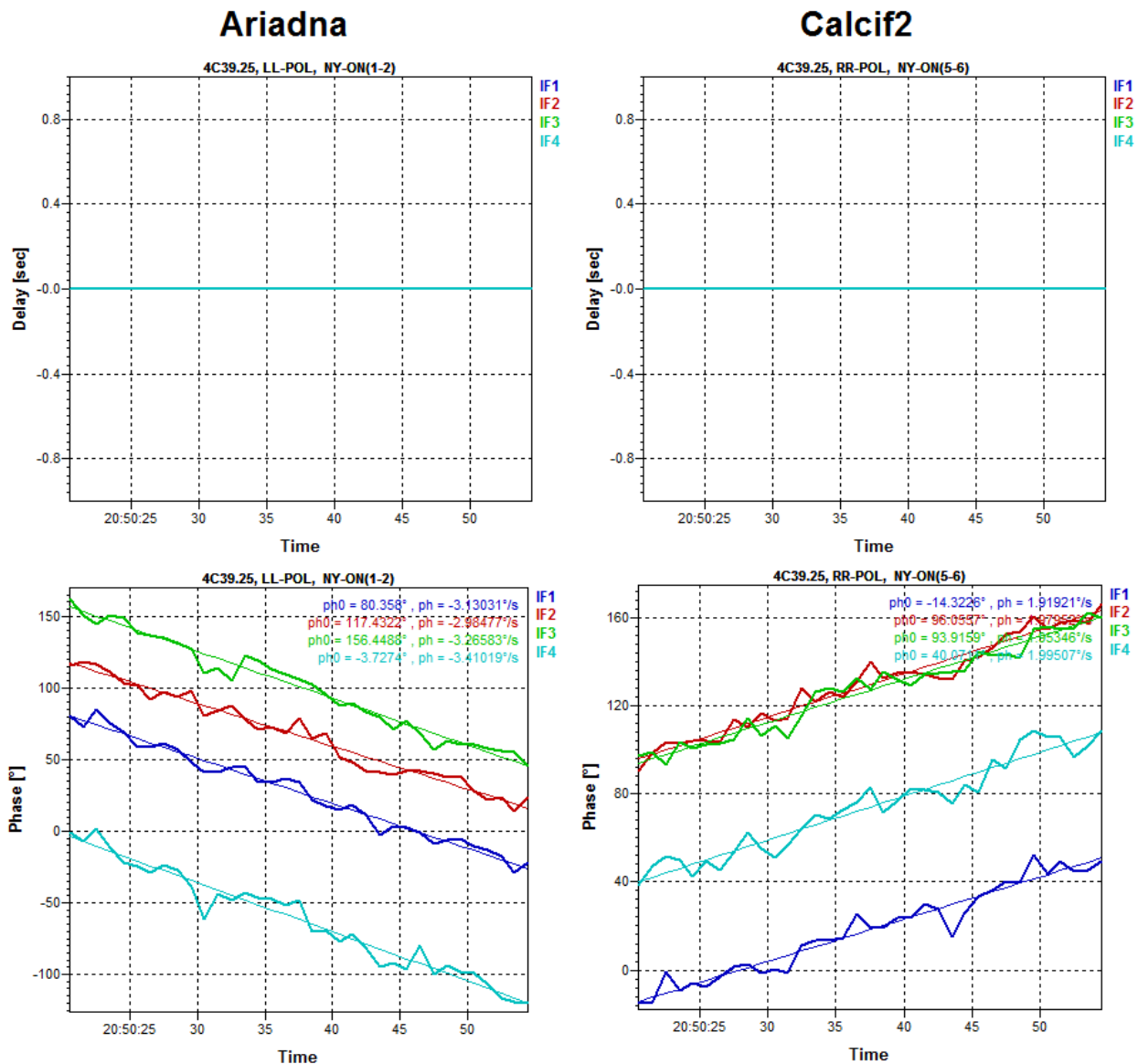


Figure 1. The delay and correlation phase from time. Fringe rate is quite similar for Ariadna and Calcif2 delay models.

On behalf of Data Processing Department the report was prepared by Andrey Andrianov (andrian@asc.rssi.ru)